

ECE Quarterly Update



Quarter 1: August 2025 – October 2025

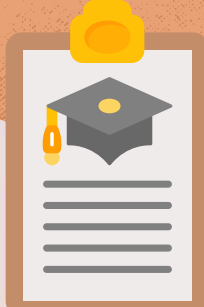
96%

is our average daily Preschool attendance



25%

of our students have an IEP



97%

of our enrolled children have a current medical "home"



Family Fall Festival

Nearly 850 individuals attended CenClear's Family fall Festival and enjoyed free food, games, fall activities, and more!

Education at the Core

We believe in building a strong foundation in education for our children. Besides preparing them academically for school, we focus on social-emotional learning with our PBIS initiative.



PBIS

Positive Behavioral Interventions & Supports



- **140 Kindness Acts** were submitted between Aug. 1st & Oct. 30th
- There were **1,078 BIRs (Behavior Incident Report)** between Aug. 1st & Oct. 30th
- **Physical aggression** was the most reported behavior (**66%** of BIRs)



"Dedicated to empowering individuals and families to lead healthier lives"

Age	#
0	52
1	76
2	109
3	249
4	351
5 +	89

Number of children per age in our programs.

Family Outcomes

Twice a year, our home visitors help families complete an assessment to help families determine where their strengths are and where their needs might be.

Within our first assessment, food and leadership/advocacy were some of our families' biggest needs.



Teaching Strategies GOLD

Three times per school year, Preschool Teachers at CenClear complete developmental assessments on children. Assessments are done using observation(what is seen naturally in the classroom) on 38 research-based objectives.

Children can either **Meet** Expectations, **Exceed** Expectations, or score **Below** Expectations on the assessments.

Percentage of Children Meeting/Exceeding Expectations

Social-Emotional Development
Objective: Manages Feelings | **75%**

Physical Development
Objective: Demonstrates Balancing Skills | **85%**

Language Development
Objective: Comprehends Language | **73%**

Cognitive Development
Objective: Shows Curiosity and Motivation | **80%**

Literacy Development
Objective: Uses and Appreciates Books and Other Texts | **83%**

Math Development
Objective: Counts | **63%**

COR Advantage

Three times per school year, Early Head Start Home Visitors at CenClear complete developmental assessments on children. Assessments are done using observation (what is seen naturally in the home) on 8 content areas and 34 key concepts.

Observations are scored on a scale from 0 –7 and then compared to national averages. Children’s assessment scores can fall **below** age-level norms, **meet** age-level norms, or reach **above** age-level norms.

Percentage of Children Meeting/Exceeding Expectations

Approaches to Learning

Initiative & Planning; Problem Solving w/ Materials; Reflection | **72%**

Social-Emotional Development

Emotions; Building Relationships; Community; Conflict Resolution | **77%**

Language, Literacy & Communication Development

Speaking; Listening & Comprehension; Phonological Awareness; Writing | **68%**

Science & Technology Development

Observing & Classifying; Experimenting; Natural/Physical World; Tools & Tech. | **77%**